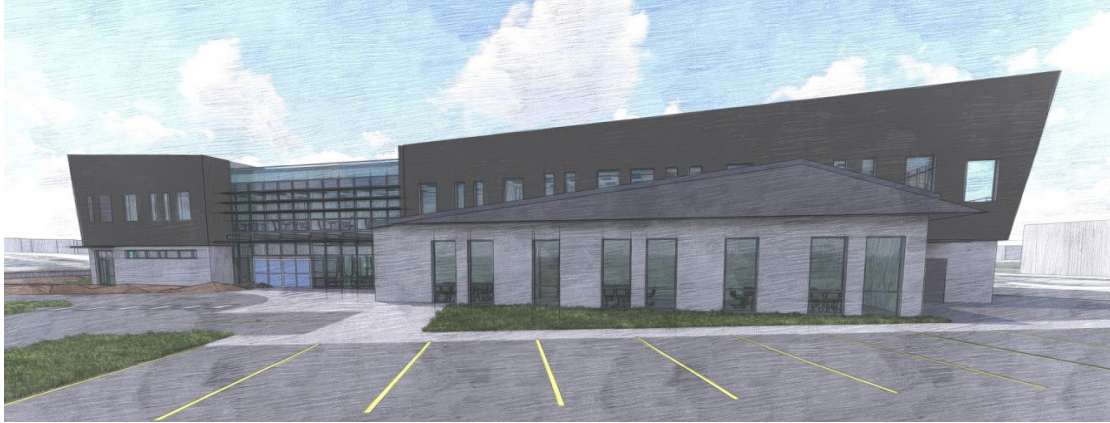


Nisqually Healing Center

sq̓'ali? həli?ilaltx̓w



The Nisqually Indian Tribe is developing a Medically Assisted Treatment (MAT) facility on Pacific Avenue in Olympia, Washington to address the opioid crisis within the Thurston County area. The Nisqually Indian Tribe is passionate about developing a whole person recovery model, keeping all services under one roof so the patient has the best possible chance at recovery. Our goals are to bring healing and wellness to the community, focusing on the entire family by serving tribal and non-tribal patients.

The Nisqually Healing Center will be a 22,000 square foot integrated care center which will be focused primarily on opioid use disorder. This facility will serve up to 500 Tribal and Non-Tribal patients and bring 80-100 jobs to the surrounding community. The services will include:

- Substance use disorder counseling and education
- Mental health counseling for individuals and families
- Medication assisted therapies (Methadone, Suboxone and Vivitrol)
- Psychiatric medication management
- Dental care
- Primary care

In addition, support services will include transportation, childcare care, vocational and educational referrals, and case management to patients participating in substance use disorder services. By providing transportation, we can break down barriers for patients so they can access services daily.

The location of this new building is 3663 Pacific Ave SE, Olympia. The proximity of the freeway and bus lines makes it easier for patients to access services at our location. We will be starting groundwork in September of 2023.

If you have any questions about the new Nisqually Healing Center, please contact the Tribal Planning and Economic Development Department.